



Getting Started With SonoSim

For Learners

The SonoSim Ultrasound Training Solution is a proven-effective ultrasound training platform that delivers:



24/7 access to online courses by leading ultrasound educators



On-demand scanning of **real-patient pathology**



A **built-in tutor** to assist with **image acquisition & interpretation**



A **portfolio of your activity** to demonstrate ultrasound knowledge & proficiency

Next Steps to Start Using SonoSim!

Take a SonoSim Course to Build a Strong Didactic Foundation

With your login credentials from your welcome email, access SonoSim Courses in three ways (*Note: You must be connected to the internet*):

1. Log in to sonosim.com/login or
2. **Plug in your SonoSim Probe** & click the SonoSim icon on your computer or
3. **Download the SonoSim App** on your phone or tablet



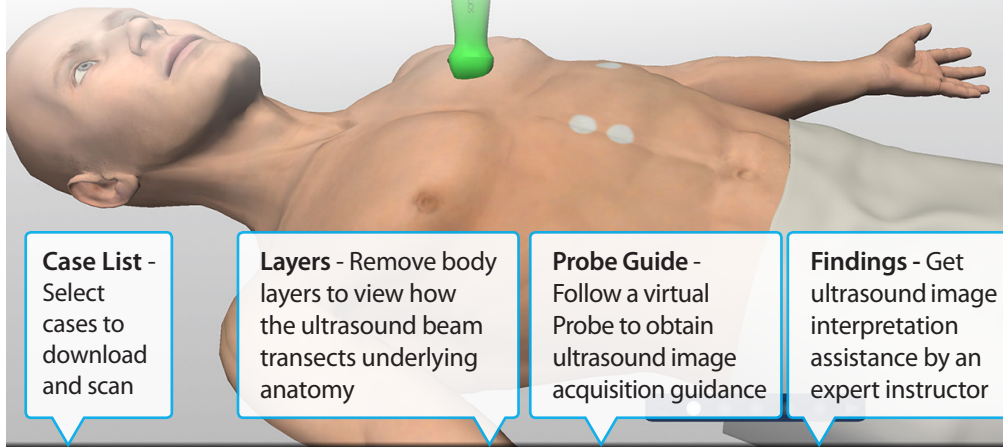
Not sure where to start? Try the Fundamentals of Ultrasound Course to get acquainted with SonoSim Courses.

Scan Cases in the SonoSimulator® to Develop Image Acquisition & Interpretation Skills

1. **Connect to the internet** and **plug in your SonoSim Probe** to the computer's USB port
2. **Double-click the SonoSim icon** on the computer to launch the SonoSim Ultrasound Training Solution
3. **Log in with your user credentials** from your welcome email and select **"Scan"**
4. For the Probe to scan optimally, please follow the directions to **calibrate**
5. **Use the Case List** in the bottom left to download and navigate to real-patient cases

Not sure where to start? Try the SonoSim SkillBox to build requisite psychomotor skills.

Adv. FoCUS: Part I
Case 2
Parasternal

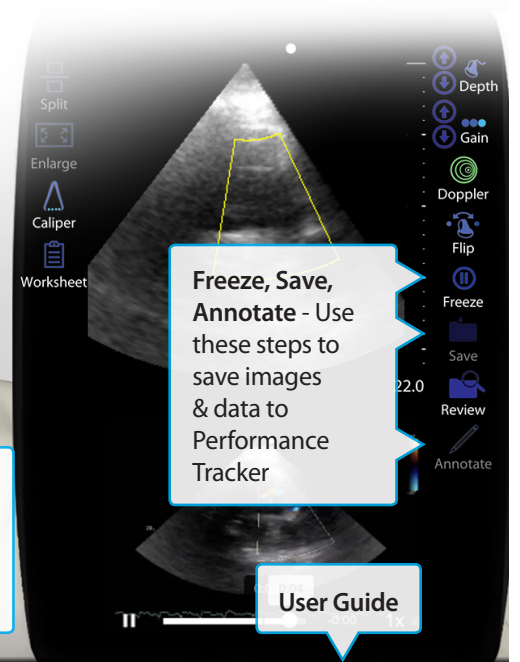


Case List - Select cases to download and scan

Layers - Remove body layers to view how the ultrasound beam transects underlying anatomy

Probe Guide - Follow a virtual Probe to obtain ultrasound image acquisition guidance

Findings - Get ultrasound image interpretation assistance by an expert instructor



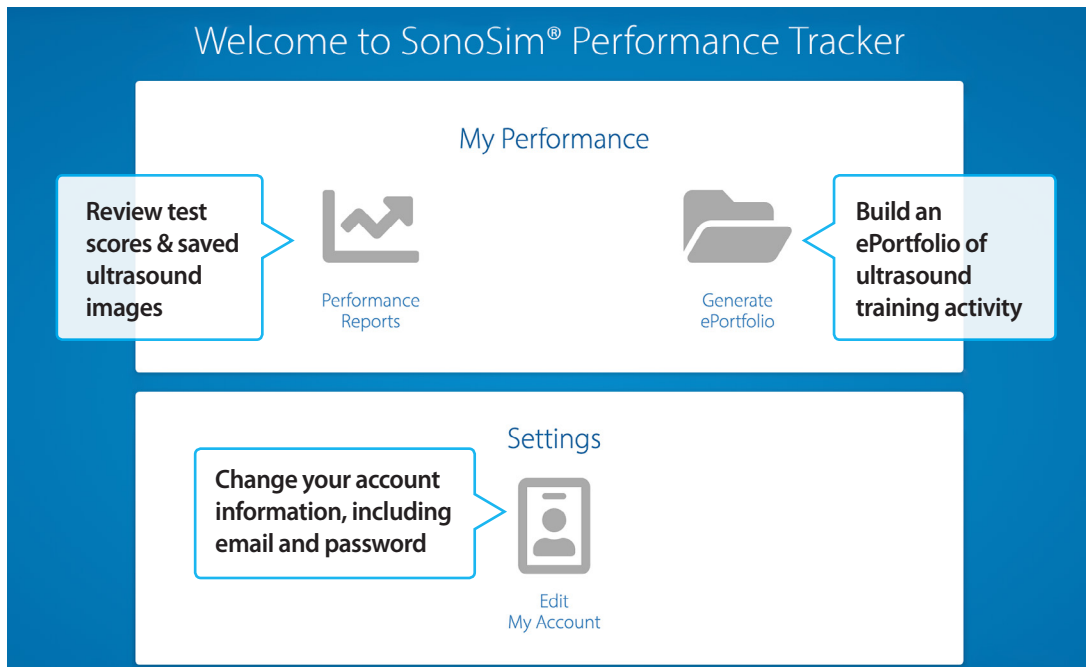
Freeze, Save, Annotate - Use these steps to save images & data to Performance Tracker

User Guide



For Groups: Use Performance Tracker to Build a Portfolio of Your Ultrasound Proficiency

1. Go to sonosim.com/login
2. Log into the **SonoSim Dashboard** with your user credentials provided in your welcome email
3. Select **"SonoSim Performance Tracker"**



Not sure where to start? Explore "Generate ePortfolio" to build a PDF of your ultrasound images and Module progress.

▶ For a video tour of product features, please visit sonosim.com/videos

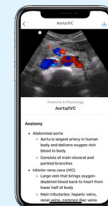
Need a personal demo?

Our Member Support Team is ready to assist!

For a personal demo or help using the features, please contact support@sonosim.com with the subject line **"Product Overview"** or call 855.873.7666 (M-F 6am-6pm, Sat 8am-4pm PT)

The SonoSim App

Exclusive for Members



The Easiest Way to Learn & Teach Ultrasonography™

